

# MONTHLY MEMBERSHIP PROGRESS REPORT

LOCATION MICHIGAN

District 11 E1

Results as of: 5/31/2023

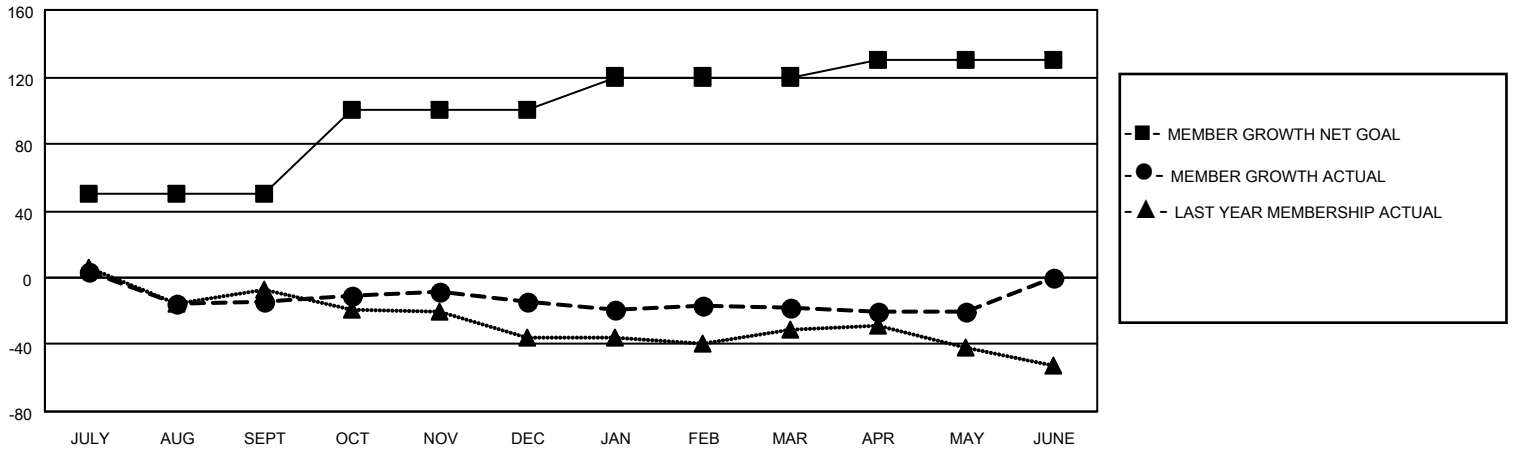
Clubs			
RESULTS FOR 2022-2023			
QUARTER	NEW CLUB GOAL	NEW CLUBS	DROPPED CLUBS
JULY/AUG/SEPT	0	0	0
OCT/NOV/DEC	0	0	0
JAN/FEB/MAR	0	0	0
APR/MAY/JUNE	1	0	0

Members			
RESULTS FOR 2022-2023			
QUARTER	MEMBER GROWTH NET GOAL	MEMBER GROWTH ACTUAL	DROPPED MEMBERS ACTUAL (including transfers)
JULY/AUG/SEPT	50	25	38
OCT/NOV/DEC	50	31	29
JAN/FEB/MAR	20	10	12
APR/MAY/JUNE	10	13	14

**GOALS AND ACTUAL NEW CLUBS CUMULATIVE**



**GOALS AND ACTUAL MEMBERS CUMULATIVE**



**DROPPED CLUBS: 0**

**23 CLUBS OF 39 ADDED 1 OR MORE NEW MEMBERS**

**GENDER DISTRIBUTION**

MALE	590 (63.99%)
FEMALE	330 (35.79%)
NON BINARY	0 (0.00%)
PREFER NOT TO ANSWER	2 (0.22%)

**DROPPED MEMBERS**

[CLICK HERE FOR CUMULATIVE MEMBERSHIP DATA](#)

DECEASED	17
CLUB CANCELLED	0
OTHER	76
<b>TOTAL</b>	<b>93</b>

TOTAL FAMILY UNIT MEMBERS	261
FAMILY MEMBERS PAYING HALF DUES	132